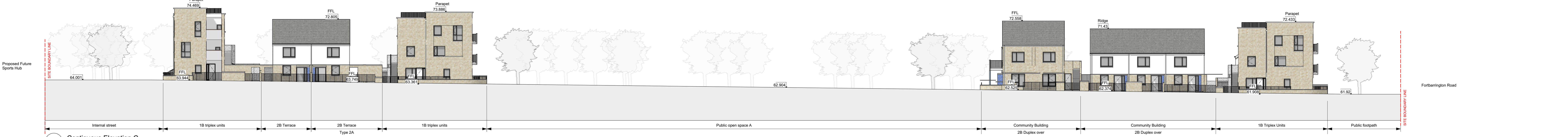


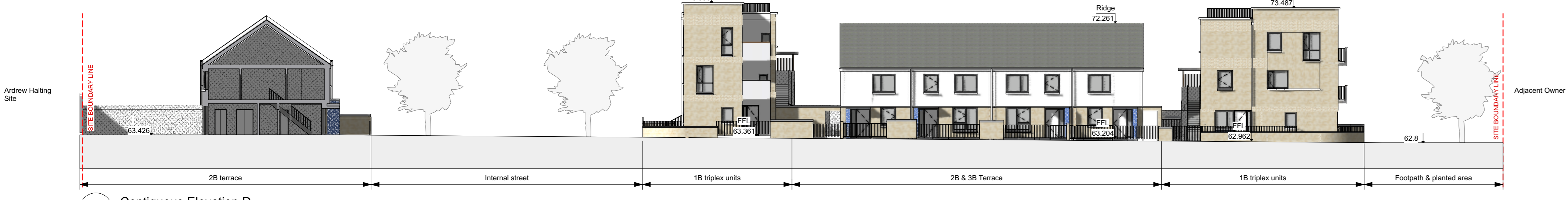
1 Contiguous Elevation A  
Scale: 1:200



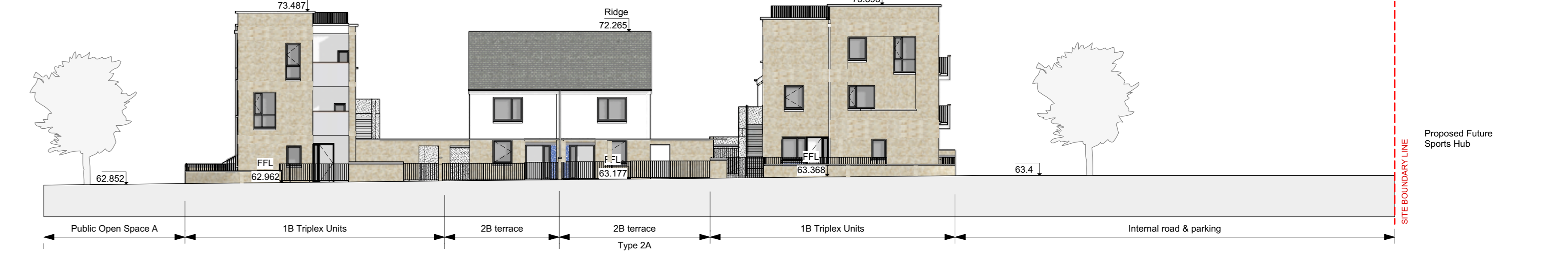
2 Contiguous Elevation B  
Scale: 1:200



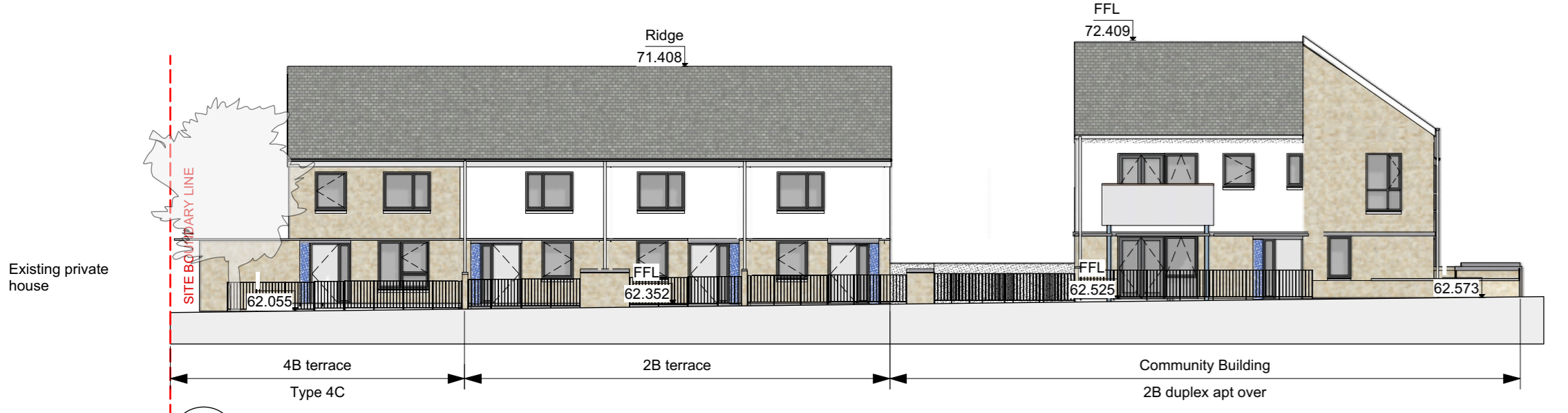
3 Contiguous Elevation C  
Scale: 1:200



4 Contiguous Elevation D  
Scale: 1:200



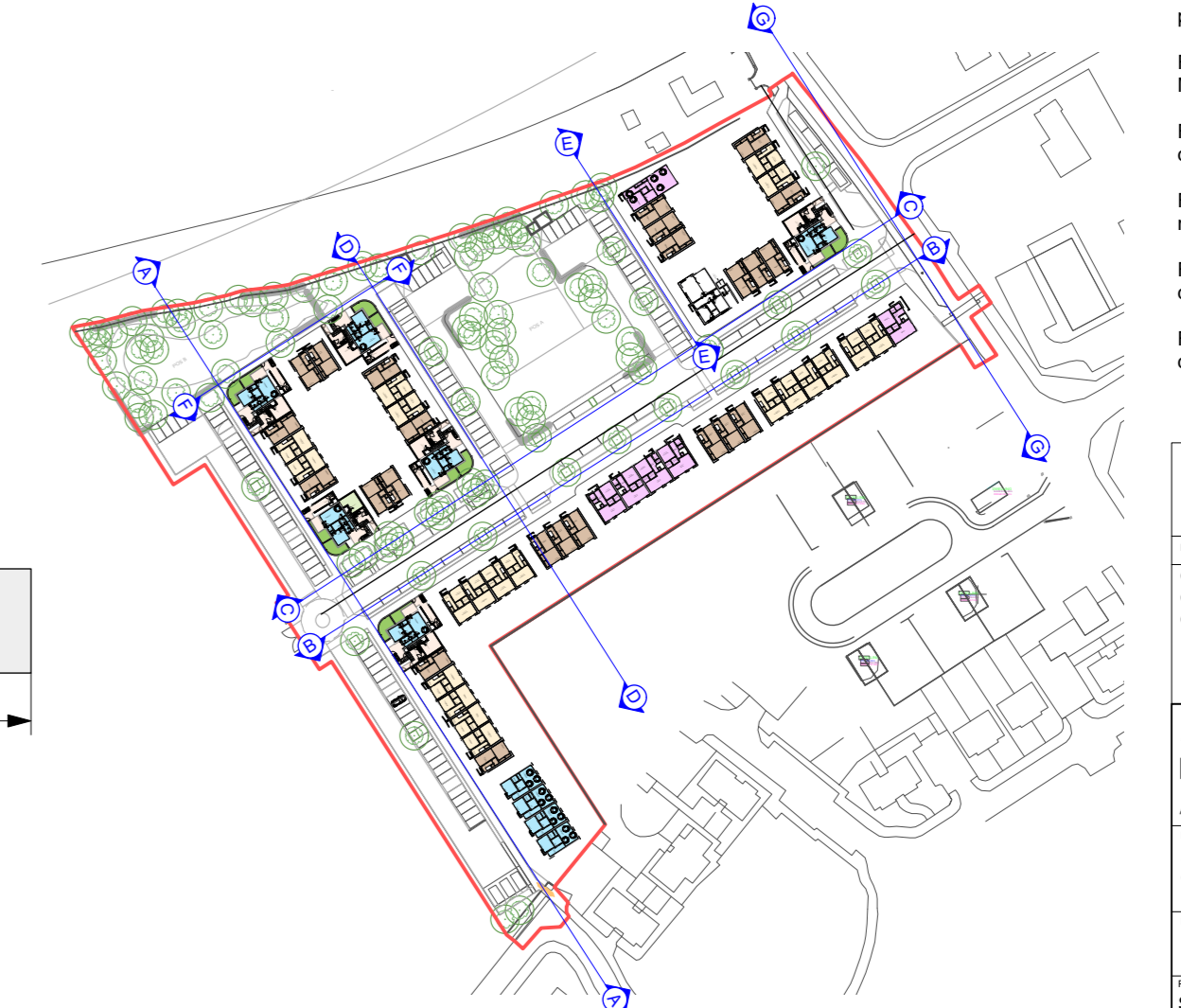
6 Contiguous Elevation F  
Scale: 1:200



5 Contiguous Elevation E  
Scale: 1:200



7 Contiguous Elevation G - Elevation to Forbarrington Road  
Scale: 1:200



Note: for boundary treatments along all site boundaries, refer to drawing SHB3-ATY-AR-COA-DR-014

For further information on planning, screening and social infrastructure, please refer to planning documentation prepared by Mitchell + Associates.

For further information on landscaping, please refer to the landscape plan prepared by Mitchell + Associates.

For further information on road engineering and drainage, please refer to engineering documentation, prepared by RPS Consulting.

For further information on mechanical and electrical engineering, including CCTV, please refer to M+E documentation, prepared by Semple and McKillop.

For further information on ecological impact assessment, please refer to ecological documentation, prepared by NMEcology.

For further information on architectural design and details, please refer to the architectural design statement, prepared by SMA. SHB3-ATY-AR-COA-RP-001

Scale: 1:200

SEAN HARRINGTON ARCHITECTS

Social Housing Bundle 3 - Residential Development at Forbarrington Road, Athy, Kildare County Council

Proposed Contiguous Elevations

Stage: 02B  
Scale: 1:200  
Date: MAR21  
Author: SM  
Check: SM

Sheet: 04 of 04  
Project: SHB3-ATY-AR-COA-DR-0012